

# AWC A single-stage liquid ring vacuum pumps



AWC 80 A  
Motor-mounted design



AWC 280 A  
Pedestal design



AWC 350 A  
Monoblock design

**Atlas Copco liquid ring pumps are ideal for pumping either dry or wet gases, with a high tolerance to liquid carry-over, especially in condensable processes. Our pumps are available in a variety of materials that can be selected to suit the pumped process media.**

AWC A single-stage liquid ring vacuum pumps feature a high-efficiency impeller design and state-of-the-art compression technology to achieve reliable and efficient vacuum performance from atmospheric pressure down to the ultimate pressure of 30 mbar(a).

The AWC A range of liquid ring vacuum pumps is available in motor-mounted, monoblock and pedestal designs.

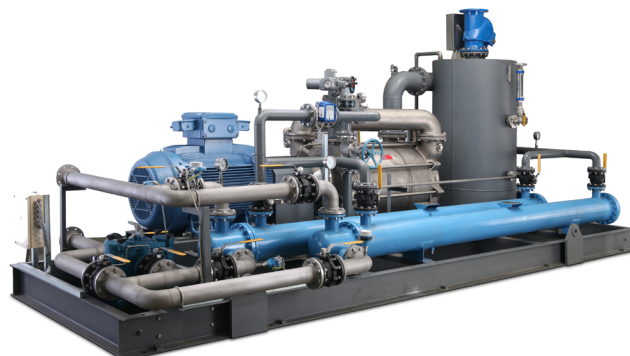
## Flexible product offering

Atlas Copco takes the hassle out of selecting your vacuum system. All AW liquid ring pumps are offered in a variety of configurations to suit your needs. They can be installed in single or multi-pump fashion as required. Well suited to end user and OEM applications alike, the AW range of liquid ring pumps will meet your needs. With 50 years of

experience in LRVP technology and customers spanning the globe, we know how to put together a liquid ring module that works for you. Reap all the benefits of liquid ring technology whilst saving water and saving energy. Add easy-to-install accessories from our standard range to complete your installation.

## Engineered systems

For more complex requirements, our project team is here to develop a unique engineered system tailored as per your needs. Atlas Copco liquid ring pumps form the backbone of multistage systems in materials of your choice to the specifications you need. With the help of Atlas Copco vacuum engineers, the possibilities are endless.



## Suitable for a wide range of applications

Liquid ring vacuum pumps are ideal for specific, humid, dirty and/or high-capacity applications in heavy industries, a selection of which can be found below.

The AWC, AWS and AWD series are the workhorses: proven, strong and reliable machines that deliver utility or process vacuum.

- Automotive industry
- Brick extrusion
- Cement and allied products
- Chemical industries
- Cosmetics and consumer products
- Environmental
- Expanded polystyrene
- Food and beverage
- General manufacturing
- Laboratory
- Medical technology
- Oil and gas
- Packaging
- Paper and allied products
- Plastics
- Textile industry
- Woodworking and wood treatment

### Summary of key features

- State-of-the-art bearing design allowing for reduced clearances and improved suction performance
- Variable area discharge porting for optimum efficiency across all inlet pressures
- Motor-mounted pumps feature economical UL/CS EPACT compliant motors
- Sturdy bearing pedestal mounts to standard NEMA, C-face motor
- 316 stainless steel impeller as standard
- Mechanical seals as standard
- Robust, reliable, low maintenance construction
- Modular design of 3 package types: once-through, partial recirculation and total recovery
- Optional materials of construction: stainless steel fitted and stainless steel complete
- Atlas Copco quality approved accessories
- Short lead times, minimum life cycle costs and optimized reliability
- Low noise level

## Materials of construction

Component	Version	
	Stainless steel fitted	Stainless steel full
Casing	Cast iron	SS 316
Port plate	Cast iron	SS 316
Impeller	SS 316	SS 316
Shaft*	SS 420	SS 316
Mechanical seal	Carbon/Carbide/Viton	Carbon/Carbide/PTFE

\*Shaft not in contact with process

## Summary of key benefits



Application flexibility through modularity



Time savings through easy installation



Up to 95% reduction of water consumption with total recovery



High reliability for a long lifetime



Cost savings through quick and easy maintenance



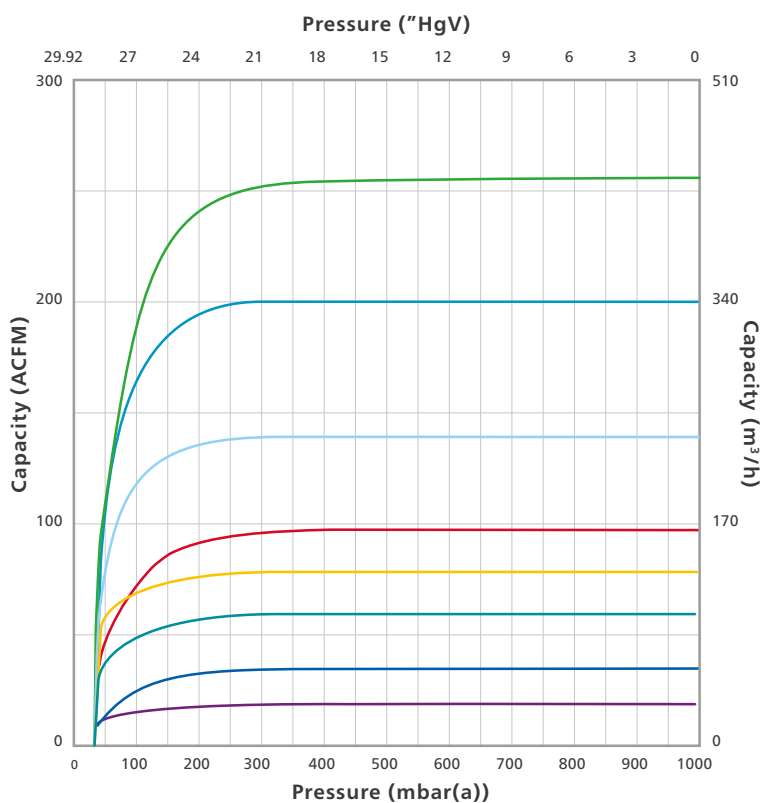
Low noise for a comfortable working environment

## Technical specifications

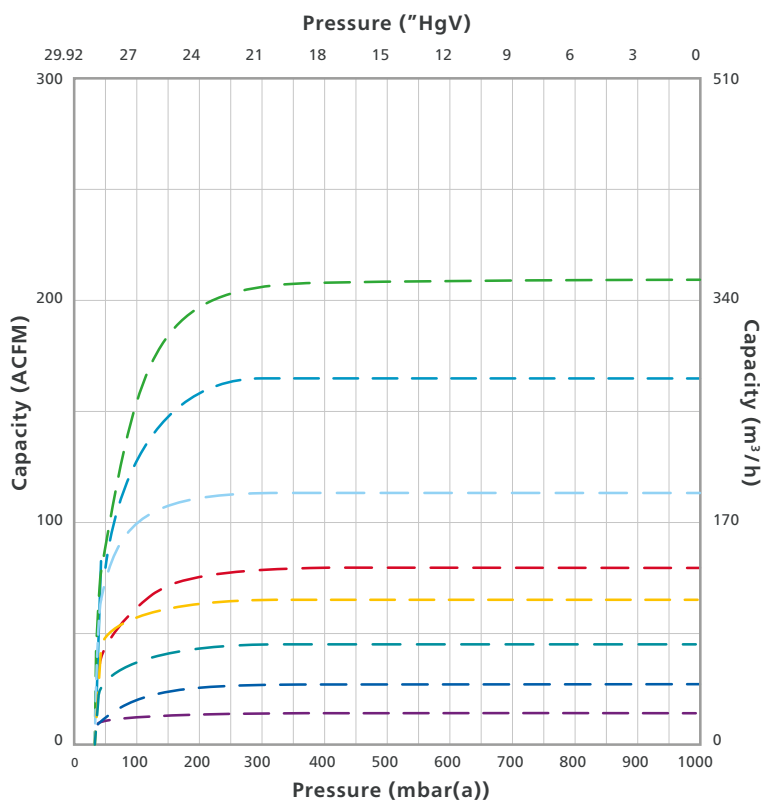
	AWC 25 A	AWC 45 A	AWC 80 A	AWC 110 A
<b>60 Hz</b>				
Nominal capacity ACFM (m <sup>3</sup> /h)	18 (31)	34 (58)	58 (47)	80 (136)
Ultimate pressure "HgV (mbar(a))	29 (30)	29 (30)	29 (30)	29 (30)
Motor power hp (kW)	1.5 (1.1)	3 (2.2)	5 (3.7)	5 (3.7)
Inlet/Outlet connection inches FNPT (DN mm)	1 (25)	1 (25)	1-1/2 (40)	1-1/2 (40)
Seal water connection inches FNPT	3/8	1/4	3/8	3/8
Approximate block dimensions (L x W x H) inches (mm)	15.3 x 7.9 x 8.7 (388 x 200 x 220)	16.3 x 9.1 x 9.3 (414 x 230 x 235)	20.7 x 13 x 13.2 (527 x 330 x 335)	21.5 x 13 x 13.2 (546 x 330 x 335)
Dry weight lbs (kg)	57 (26)	63 (29)	164 (74)	170 (77)
	AWC 140 A	AWC 190 A	AWC 280 A	AWC 350 A
<b>60 Hz</b>				
Nominal capacity ACFM (m <sup>3</sup> /h)	97 (165)	138 (234)	201 (342)	254 (432)
Ultimate pressure "HgV (mbar(a))	29 (30)	29 (30)	29 (30)	29 (30)
Motor power hp (kW)	7.5 (5.6)	10 (7.5)	15 (11)	20 (15)
Inlet/Outlet connection inches FNPT (DN mm)	1-1/2 (40)	2-1/2 (65)	2-1/2 (65)	2-1/2 (65)
Seal water connection inches FNPT	3/8	1/2	1/2	1/2
Approximate block dimensions (L x W x H) inches (mm)	21.8 x 13 x 13.2 (555 x 330 x 335)	27.7 x 15.2 x 16.1 (703 x 387 x 408)	28.9 x 15.2 x 16.1 (734 x 387 x 408)	30.7 x 15.2 x 16.1 (779 x 15.2 x 408)
Dry weight lbs (kg)	171 (78)	297 (135)	307 (139)	323 (146)
	AWC 25 A	AWC 45 A	AWC 80 A	AWC 110 A
<b>50 Hz</b>				
Nominal capacity ACFM (m <sup>3</sup> /h)	15 (25)	27 (45)	47 (80)	65 (110)
Ultimate pressure "HgV (mbar(a))	29 (30)	29 (30)	29 (30)	29 (30)
Motor power hp (kW)	1.2 (0.9)	2.5 (1.9)	4 (3)	4 (3)
Inlet/Outlet connection inches (DN mm)	1 (25)	1 (25)	1-1/2 (40)	1-1/2 (40)
Seal water connection inches FNPT	3/8	1/4	3/8	3/8
Approximate block dimensions (L x W x H) inches (mm)	15.3 x 7.9 x 8.7 (388 x 200 x 220)	16.3 x 9.1 x 9.3 (414 x 230 x 235)	20.7 x 13 x 13.2 (527 x 330 x 335)	21.5 x 13 x 13.2 (546 x 330 x 335)
Dry weight lbs (kg)	57 (26)	63 (29)	164 (74)	170 (77)
	AWC 140 A	AWC 190 A	AWC 280 A	AWC 350 A
<b>50 Hz</b>				
Nominal capacity ACFM (m <sup>3</sup> /h)	79 (134)	112 (190)	164 (279)	206 (350)
Ultimate pressure "HgV (mbar(a))	29 (30)	29 (30)	29 (30)	29 (30)
Motor power hp (kW)	5 (3.7)	7.5 (5.6)	10 (7.5)	15 (11)
Inlet/Outlet connection inches (DN mm)	1-1/2 (40)	2-1/2 (65)	2-1/2 (65)	2-1/2 (65)
Seal water connection inches FNPT	3/8	1/2	1/2	1/2
Approximate block dimensions (L x W x H) inches (mm)	21.8 x 13 x 13.2 (555 x 330 x 335)	27.7 x 15.2 x 16.1 (703 x 387 x 408)	28.9 x 15.2 x 16.1 (734 x 387 x 408)	30.7 x 15.2 x 16.1 (779 x 15.2 x 408)
Dry weight lbs (kg)	171 (78)	297 (135)	307 (139)	323 (146)

# AWC single-stage capacity performance

## Performance range (60Hz)



## Performance range (50Hz)



**Atlas Copco**

Phone: (866) 546-3588

NACustomerCare@vt.atlascopco.com

atlascopco.com/en-us/vacuum-solutions

